



Cable ID: CAT6/SFTP/01

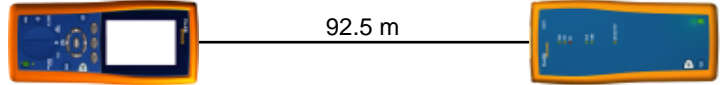
Date / Time: 02/03/2022 12:43:43 PM
 Headroom 3.7 dB (NEXT 36-45)
 Test Limit: TIA Cat 6 Channel
 Cable Type: Cat 6 F/UTP
 NVP: 70.0%

Operator: PANATEL
 Software Version: 2.7800
 Limits Version: 1.9500

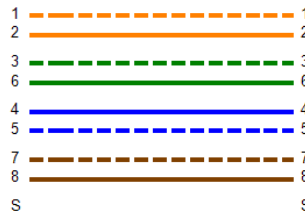
Test Summary: PASS

Model: DTX-1800
 Main S/N: 9301002
 Remote S/N: 9392044
 Main Adapter: DTX-CHA002
 Remote Adapter: DTX-CHA002

Length (m), Limit 100.0	[Pair 45]	92.5
Prop. Delay (ns), Limit 555	[Pair 78]	475
Delay Skew (ns), Limit 50	[Pair 78]	34
Resistance (ohms)	[Pair 45]	17.8
Insertion Loss Margin (dB)	[Pair 78]	9.9
Frequency (MHz)	[Pair 78]	250.0
Limit (dB)	[Pair 78]	35.9

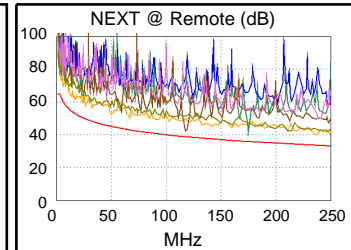
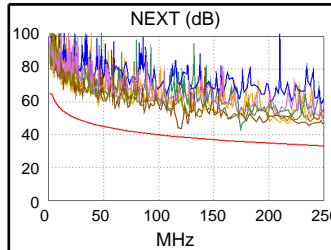


Wire Map (T568B)
PASS

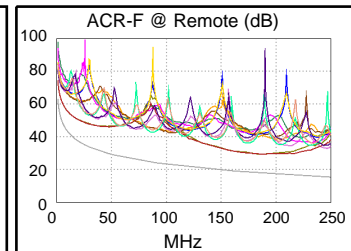
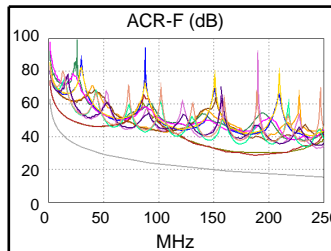


Worst Case Margin Worst Case Value

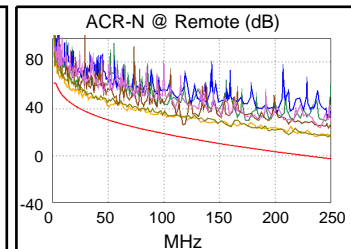
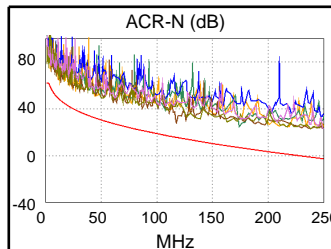
PASS	MAIN	SR	MAIN	SR
Worst Pair	36-45	36-45	12-45	12-36
NEXT (dB)	4.8	3.7	7.6	6.2
Freq. (MHz)	120.0	120.0	174.5	235.5
Limit (dB)	38.6	38.6	35.8	33.6
Worst Pair	36	36	12	36
PS NEXT (dB)	7.5	4.7	9.8	7.3
Freq. (MHz)	120.0	120.0	174.5	235.5
Limit (dB)	35.7	35.7	32.9	30.6



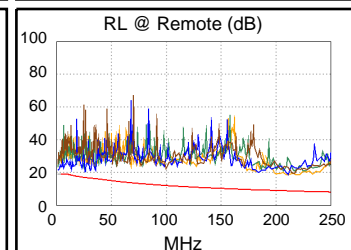
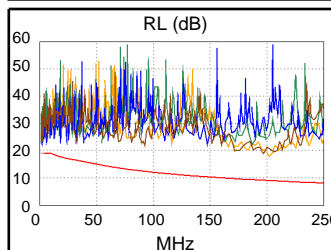
PASS	MAIN	SR	MAIN	SR
Worst Pair	45-36	36-45	45-36	36-45
ACR-F (dB)	10.8	11.2	10.8	11.2
Freq. (MHz)	186.0	186.0	188.0	186.0
Limit (dB)	17.9	17.9	17.8	17.9
Worst Pair	36	36	36	45
PS ACR-F (dB)	12.7	12.9	13.5	13.6
Freq. (MHz)	1.0	1.4	188.0	188.0
Limit (dB)	60.3	57.5	14.8	14.8



N/A	MAIN	SR	MAIN	SR
Worst Pair	36-45	36-45	36-45	12-36
ACR-N (dB)	12.0	10.2	23.7	17.2
Freq. (MHz)	120.0	120.0	237.0	235.5
Limit (dB)	15.0	15.0	-1.3	-1.1
Worst Pair	36	36	36	36
PS ACR-N (dB)	14.3	11.5	25.2	19.7
Freq. (MHz)	120.0	120.0	249.5	249.0
Limit (dB)	12.1	12.1	-5.7	-5.7



PASS	MAIN	SR	MAIN	SR
Worst Pair	45	45	12	12
RL (dB)	4.8	3.5	9.0	9.5
Freq. (MHz)	5.9	3.8	202.0	211.5
Limit (dB)	19.0	19.0	8.9	8.7



Compliant Network Standards:
 10BASE-T 100BASE-TX 100BASE-T4
 1000BASE-T ATM-25 ATM-51
 ATM-155 100VG-AnyLan TR-4
 TR-16 Active TR-16 Passive